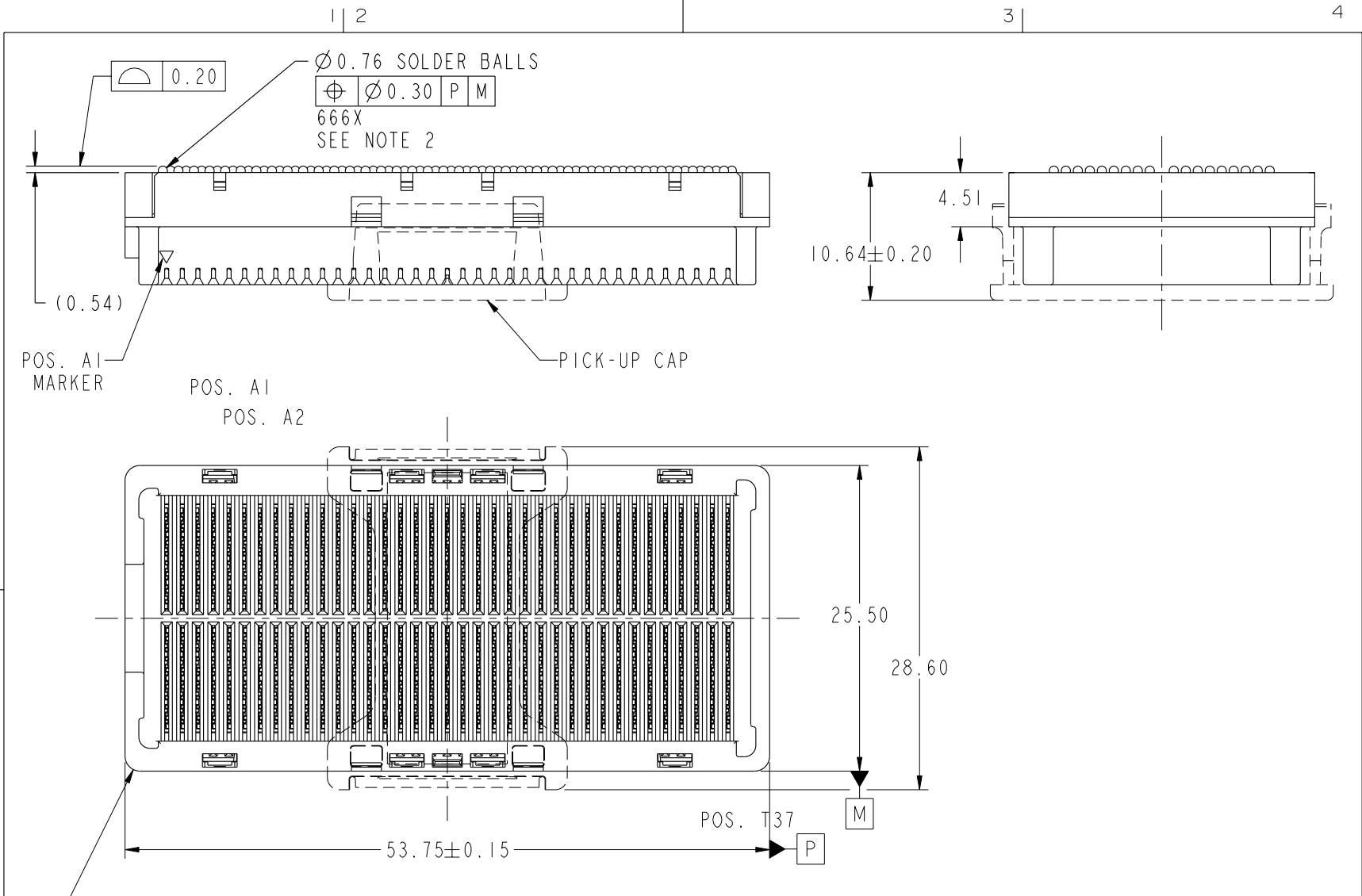




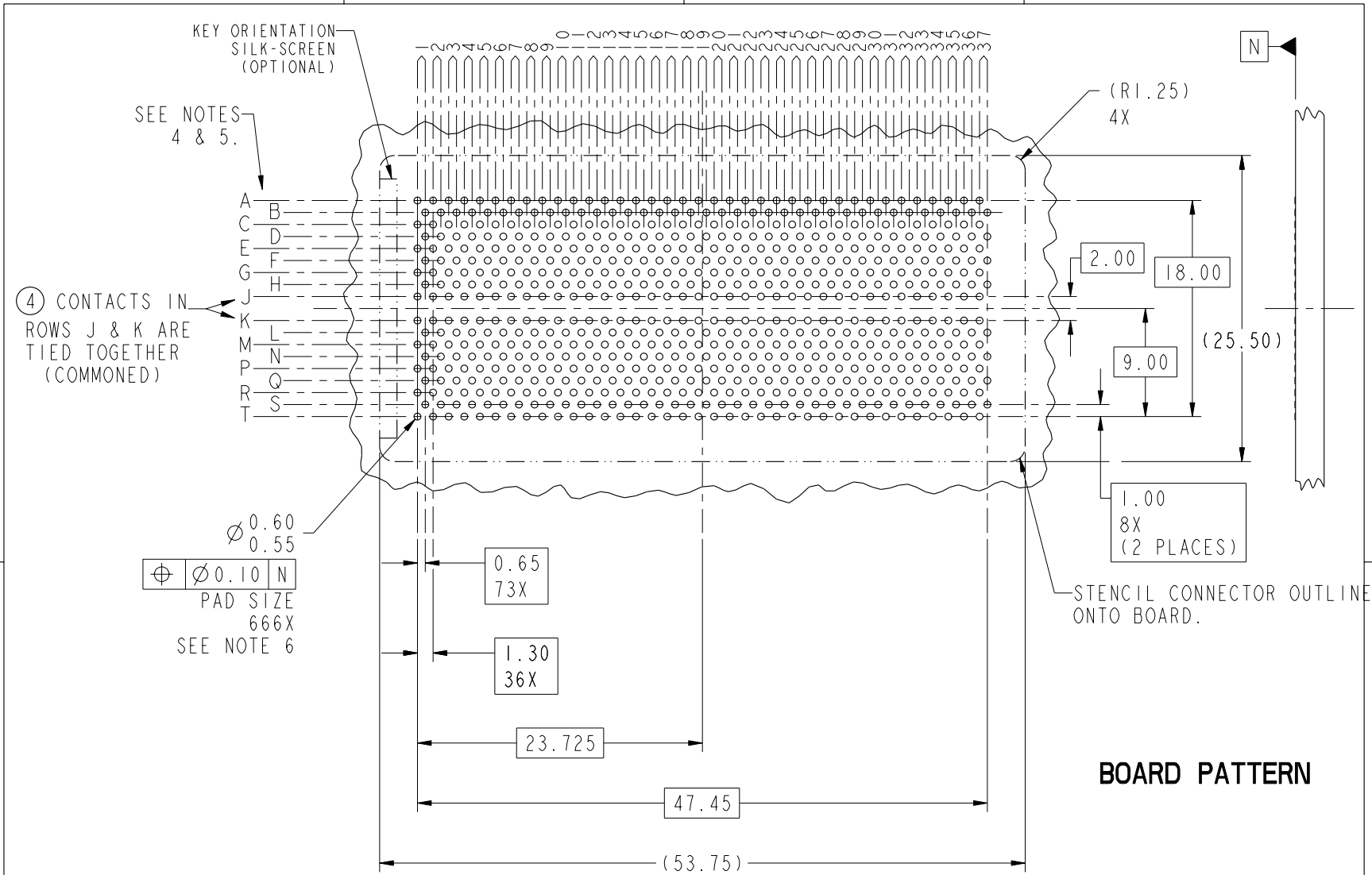
This document is the property of and embodies CONFIDENTIAL and PROPRIETARY information of FCI. No part of the information shown on this document may be used in any way or disclosed to others without the written consent of FCI. Copyright FCI.



| | | | | | | | | | | | |
|-------------|----------------|-----|------------|------------|---------------|---------------------------------------|-------|----------|-----------------------------------|--------------------|--|
| mat'l code | | | | SEE NOTE 1 | | tolerances unless otherwise specified | | CUSTOMER | | www.fciconnect.com | |
| ltr | ecn no. | dr | date | linear | 0.X ± 0.3 | | COPY | | projection | title | |
| A | V20428 | LRJ | 2002-03-11 | | 0.XX ± 0.10 | | MM | | | GIG-Array | |
| B | V03-0427 | TAB | 2003-04-14 | angles | 0.XXX ± 0.050 | | MM | | 5mm RECP. ASSY. 296 SIG. POS. | | |
| C | V03-1036 | TAB | 2003-09-15 | | 0° ± 2° | | 2:1 | | product family GIG-Array code 213 | | |
| D | V05-0052 | VS | 2005-10-14 | dr | R. JOHNSON | 2001-03-05 | scale | | size dwg no | | |
| E | V06-0435 | LP | 2006-05-08 | enr | D. JOHNESCU | 2001-01-09 | A | | 55701 | | |
| F | V06-0558 | LP | 2006-06-21 | chr | J. SHAFFER | 2001-05-04 | | | sheet 1 of 4 | | |
| G | V08-0176 | HTB | 2008-04-08 | appd | D. JOHNESCU | 2001-05-04 | | | | | |
| sheet index | revision sheet | 6 1 | 6 2 | 6 3 | 6 4 | | | | | | |



This document is the property of and embodies
 CONFIDENTIAL and PROPRIETARY information of FCI.
 No part of the information shown on this
 document may be used in any way or disclosed
 to others without the written consent of FCI.
 Copyright FCI.



SEE NOTES
 4 & 5.

KEY ORIENTATION
 SILK-SCREEN
 (OPTIONAL)

(4) CONTACTS IN
 ROWS J & K ARE
 TIED TOGETHER
 (COMMONED)

Ø 0.60
 0.55

| | | |
|---|--------|---|
| ⊕ | Ø 0.10 | N |
|---|--------|---|

PAD SIZE
 666X
 SEE NOTE 6

BOARD PATTERN

| | | | | | | | | | | | |
|-------------|----------------|----|------|------------|-------------|---------------------------------------|--|------------|-------------------------------|---------------------------|-------|
| mat'l code | | | | SEE NOTE 1 | | tolerances unless otherwise specified | | CUSTOMER | | FCI www.fciconnect.com | |
| ltr | ecm no. | dr | date | linear | | 0.X ± 0.3 | | COPY | title | | |
| G | | | | | | 0.XX ± 0.10 | | projection | GIG-Array | | |
| | | | | angles | | 0.XXX ± 0.050 | | ⊕ | 5mm RECP. ASSY. 296 SIG. POS. | | |
| | | | | dr | R. JOHNSON | 2001-03-05 | | MM | product family | GIG-Array | code |
| | | | | enr | D. JOHNESCU | 2001-01-09 | | ← | size | dwg no | 213 |
| | | | | chr | J. SHAFFER | 2001-05-04 | | → | A | 55701 | sheet |
| | | | | appd | D. JOHNESCU | 2001-05-04 | | scale | | | 2 |
| sheet index | revision sheet | | | | | | | | | | |

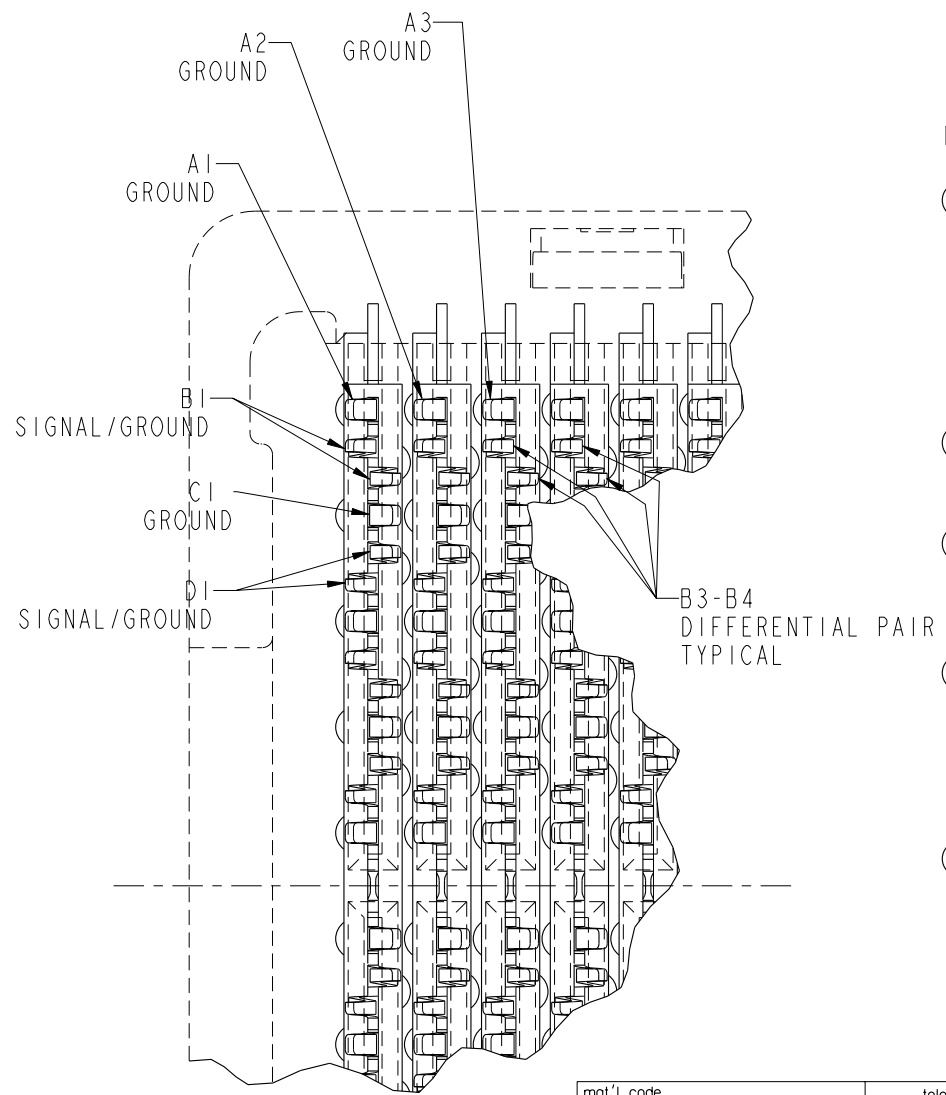
cage code 22526

Pro/E

PDM: Rev:G

STATUS: Released

Printed: Apr 12, 2008



NOTES:

- ① MATERIAL:
HOUSING: LCP
CONTACT: COPPER ALLOY
PLATING (CONTACT): Au OVER Ni.
UL RATING: 94 V-0
SOLDER BALL: (SEE TABLE) EUTECTIC SnPb OR LEADFREE 95.5 Sn/4Ag/0.5Cu
- ② SOLDER BALLS WILL NOT BE PERFECT SPHERICAL SHAPE DUE TO REFLOW ATTACHMENT.
- ③ MATED HEIGHT EFFECTED BY CUSTOMERS' PCB PAD SIZE, PLATING, SOLDER REFLOW PROFILE & SOLDER PASTE.
- ④ CONTACTS IN ROWS A,C,E,G,J,K,M,P,R AND T ARE SINGLE BEAM CONTACTS, TYPICALLY USED AS GROUND PINS. (NOTE: CONTACTS IN ROWS J & K ARE TIED TOGETHER [COMMONED])
- ⑤ CONTACTS IN ROWS B,D,F,H,L,N,Q AND S ARE DUAL BEAM CONTACTS, TYPICALLY USED AS SIGNAL PINS.

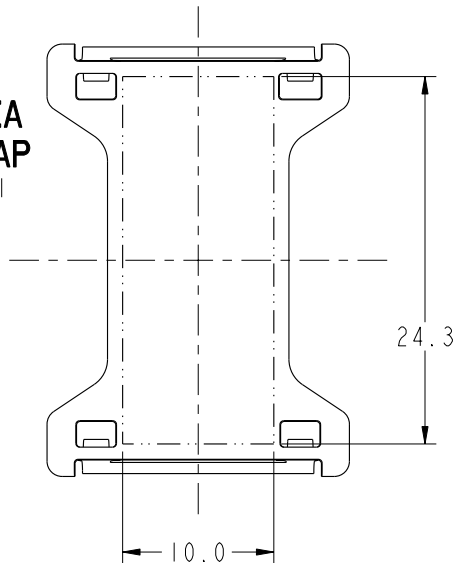
RECEPTACLE INTERFACE DESCRIPTION

| | | | | | | | | | |
|-------------|----------------|------------|------|---------------------------------------|------------------------|----------|--|-------------------------------|--|
| mat'l code | | SEE NOTE 1 | | tolerances unless otherwise specified | | CUSTOMER | | FCj www.fciconnect.com | |
| ltr | ecn no. | dr | date | linear | 0.X ±0.3 | COPY | | title | |
| G | | | | projection | 0.XX ±0.10 | MM | | GIG-Array | |
| | | | | angles | 0.XXX ±0.050 | 7:1 | | 5mm RECP. ASSY. 296 SIG. POS. | |
| | | | | dr | 0° ±2° | scale | | product family | |
| | | | | enr | R. JOHNSON 2001-03-05 | A | | GIG-Array | |
| | | | | chr | D. JOHNESCU 2001-01-09 | size | | code | |
| | | | | appd | J. SHAFFER 2001-05-04 | dwg no | | 213 | |
| | | | | | D. JOHNESCU 2001-05-04 | 55701 | | sheet | |
| sheet index | revision sheet | | | | | | | 3 | |

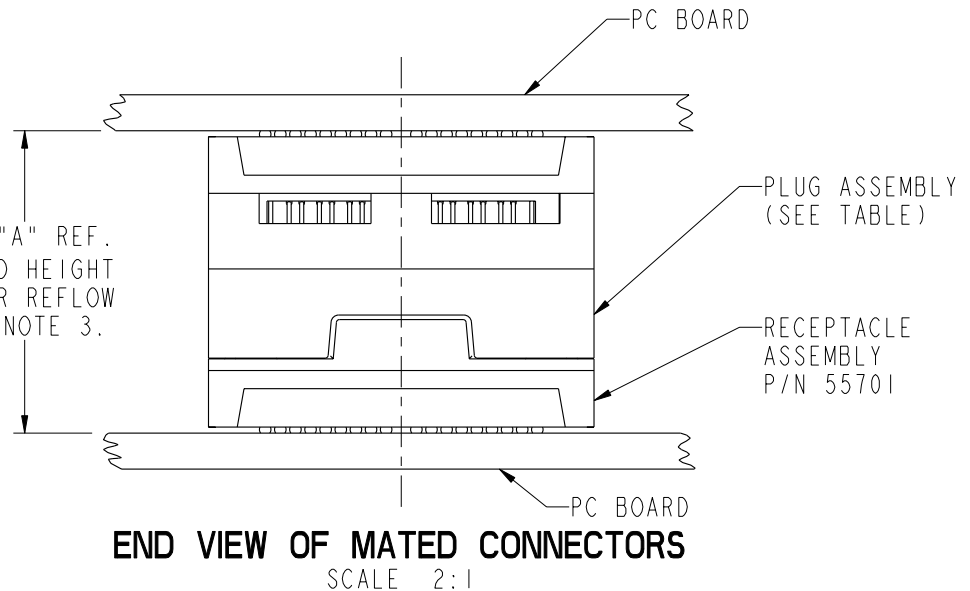
This document is the property of and embodies CONFIDENTIAL and PROPRIETARY information of FCj. No part of the information shown on this document may be used in any way or disclosed to others without the written consent of FCj. Copyright FCj.

| | |
|----------------|------------------------|
| PRODUCT NUMBER | SOLDER BALL |
| 55701-001 | SnPb |
| 55701-001LF | SnAgCu LEADFREE (7)(8) |

FLAT AREA PICK-UP CAP
SCALE 2:1



DIM "A" REF. MATED HEIGHT AFTER REFLOW SEE NOTE 3.



END VIEW OF MATED CONNECTORS
SCALE 2:1

NOTES CONTINUED

- ⑥ SPECIFIED POSITIONAL TOLERANCE DEFINES PAD TO PAD LOCATION WITHIN LAND PATTERN. POSITIONAL TOLERANCE OF LAND PATTERN TO FUDICIAL MARKS OR PCB DATUMS SHALL BE DEFINED BY CUSTOMER. FOR RECOMMENDED PRODUCT APPLICATION AND PCB DESIGN DETAILS, SEE DOC. NO. GS-20-016.
- ⑦ FOR PROPER APPLICATION FOLLOW FCI APPLICATION SPECIFICATION GS-20-033 LEADFREE SOLDER BALLS WILL NOT SOLDER PROPERLY IN A LEADED SOLDER PROCESS DUE TO A HIGHER REFLOW TEMPERATURE. LEADFREE PRODUCT IS THEREFORE NOT BACKWARDS COMPATIBLE WITH LEADED OR SOME SOLDERING APPLICATIONS. REFERENCE FCI APPLICATION SPECIFICATION.
- ⑧ THIS PRODUCT MEETS THE EUROPEAN UNION DIRECTIVES AND OTHER COUNTRY REGULATIONS AS DESCRIBED IN GS-22-008. PRODUCT MEETING WITH THIS DIRECTIVE IS IDENTIFIED IN THE LOT CODE NUMBER MARKED ON EACHPART BY HAVING AN "X" IN THE SEVENTH CHARACTER POSITION.

| DIM. "A" | PLUG ASSEMBLY P/N |
|----------|-------------------|
| 15 | 55720 |
| 17 | 10026804 |
| 18 | 10008026 |
| 20 | 55700 |
| 25 | 55727 |

| | | | | | | | | | | | |
|-------------|----------------|----|------|------------|--------------|---------------------------------------|------|----------|-------------------------------|---------------------------|--|
| mat'l code | | | | SEE NOTE 1 | | tolerances unless otherwise specified | | CUSTOMER | | FCI www.fciconnect.com | |
| ltr | ecr no. | dr | date | linear | 0.X ±0.3 | | COPY | | projection | title | |
| G | | | | | 0.XX ±0.10 | | MM | | | GIG-Array | |
| | | | | angles | 0.XXX ±0.050 | | MM | | 5mm RECP. ASSY. 296 SIG. POS. | | |
| | | | | | 0° ±2° | | 2:1 | | product family GIG-Array code | | |
| | | | | dr | R. JOHNSON | 2001-03-05 | A | | size | | |
| | | | | enr | D. HARPER | 2001-01-09 | A | | 55701 | | |
| | | | | chr | J. SHAFFER | 2001-05-04 | A | | sheet | | |
| | | | | appd | D. JOHNSCU | 2001-05-04 | A | | 4 | | |
| sheet index | revision sheet | | | | | | | | | | |



This document is the property of and embodies CONFIDENTIAL and PROPRIETARY information of FCI. No part of the information shown on this document may be used in any way or disclosed to others without the written consent of FCI. Copyright FCI.